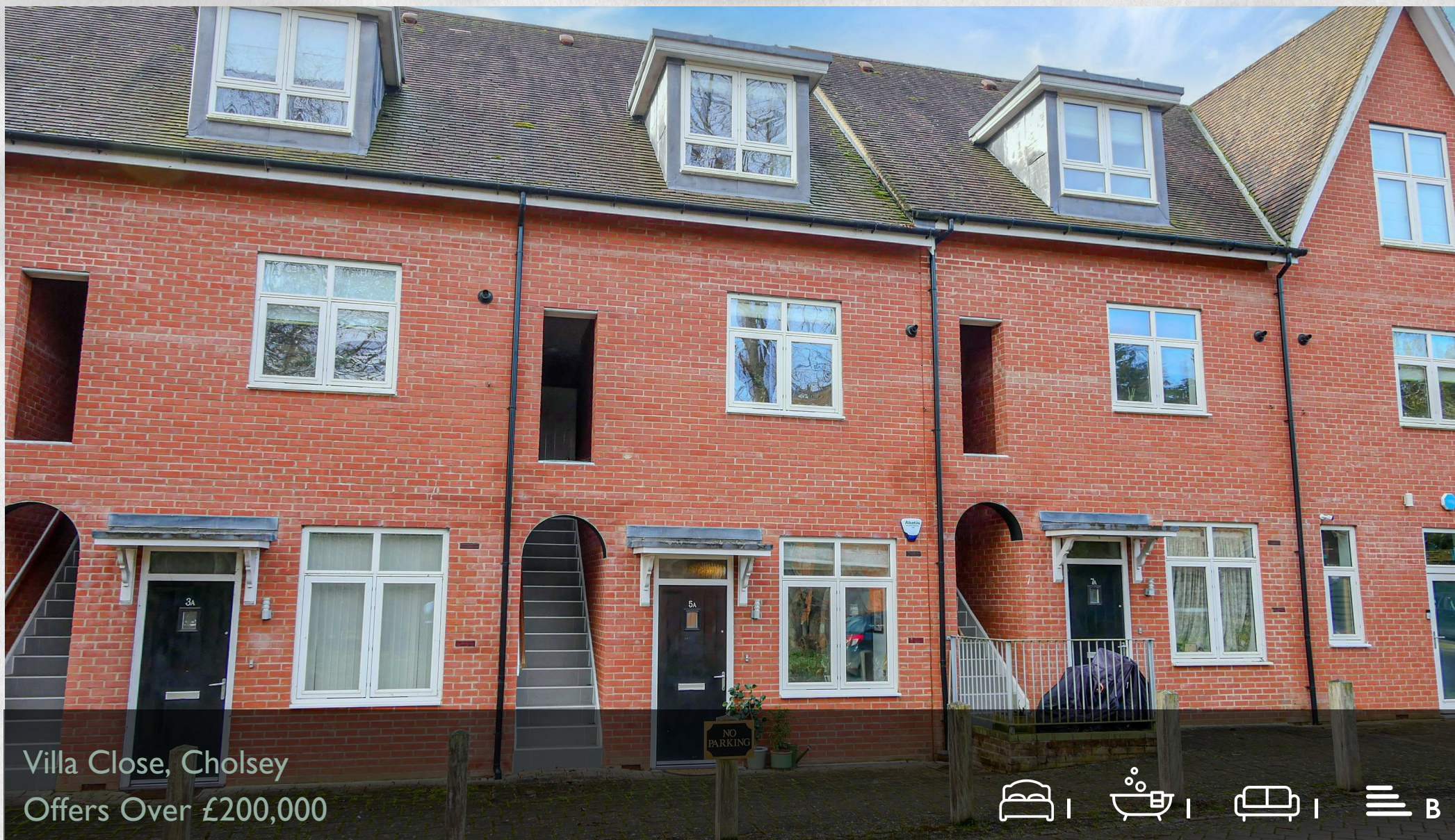


WE VALUE



YOUR HOME



Villa Close, Cholsey  
Offers Over £200,000





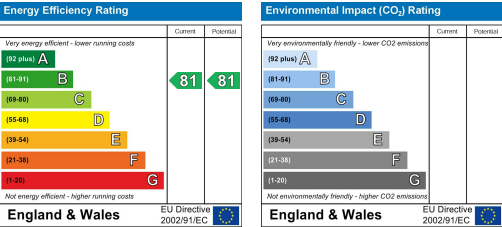
This beautifully presented, one-bedroom, ground-floor apartment offers comfortable living in a highly convenient location. The open-plan kitchen and living room are spacious, with a large walk-in storage cupboard providing ample space for all your essentials. The property includes allocated parking for one vehicle, ensuring easy access at all times. Situated just a short distance from Cholsey train station, you'll enjoy direct links to London, making it ideal for commuters. Scenic riverside walks are right on your doorstep, with village shops and amenities close by for everyday convenience.

#### What the Owner Says...

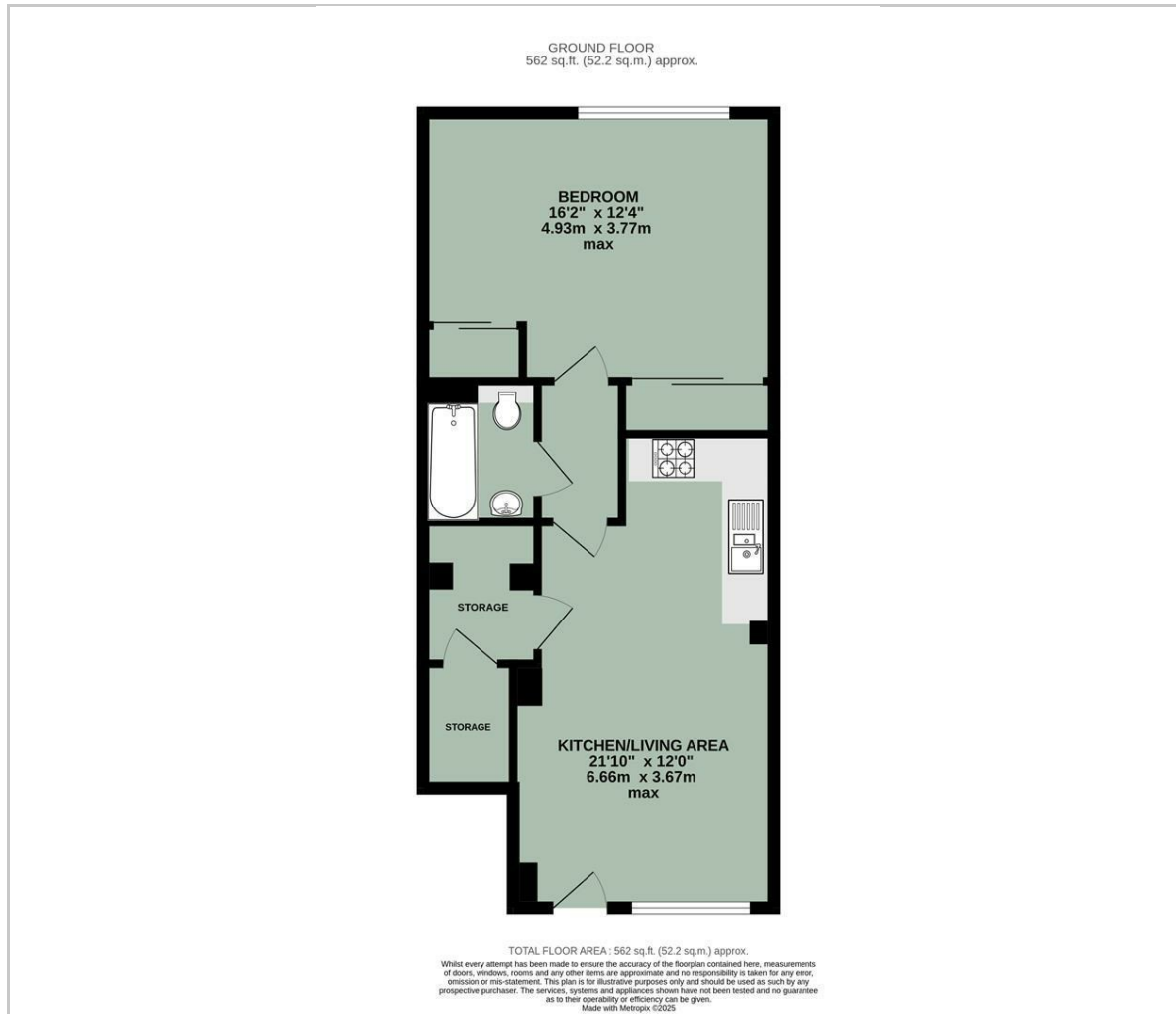
"Enjoy the peace and serenity of this quiet location, complemented by the warmth of friendly neighbours. With excellent transport links by both bus and train, you'll have easy access to everything you need, while being nestled in the heart of nature. It's the perfect blend of convenience and tranquility."



- GROUND FLOOR APARTMENT
- OPEN PLAN KITCHEN/LIVING ROOM
- EASY ACCESS TO CHOLSEY TRAIN STATION WITH DIRECT LINKS TO LONDON
- DOUBLE BEDROOM
- ALLOCATED PARKING FOR ONE VEHICLE
- CLOSE TO TRANSPORT LINKS, VILLAGE SHOPS & AMENITIES
- LOCATED ON A DESIRABLE COMMUNITY DEVELOPMENT



## Floor Plan



## Area Map



## Viewing

Please contact our In House Sales & Lettings Office on 01491 839999 opt.1  
if you wish to arrange a viewing appointment for this property or require further information.

These particulars, whilst believed to be accurate are set out as a general outline only for guidance and do not constitute any part of an offer or contract. Intending purchasers should not rely on them as statements of representation of fact, but must satisfy themselves by inspection or otherwise as to their accuracy. No person in this firm's employment has the authority to make or give any representation or warranty in respect of the property.

28 St Martins Street, Wallingford, Oxfordshire, OX10 0AL  
Tel: 01491 839999 opt.1 Email: [sales@inhouseestateagents.co.uk](mailto:sales@inhouseestateagents.co.uk) [www.inhouseestateagents.co.uk](http://www.inhouseestateagents.co.uk)